

User Manual

Personal Spokesman

Version 1.0



EyalGPS LTD.

www.eyalgps.com



32 Egoz st. Qiriyat Bialik, Zip code 27237, ISRAEL
Cell: 972-52-5390344 Tel: 972-4-8766750
Fax: 972-4-8742196 E-Mail: EyalGPS@gmail.com

Copyright

EyalGPS

32 Egoz st. Qiriyat Bialik

ISRAEL

www.eyalgps.com

The product and information displayed are to be changed in any time and without an early notice.

This manual and any part of it are forbidden to be copied and/or changed in any electronic or mechanic way (including copy paper) without an explicit agreement in writing from EyalGPS LTD.

All rights reserved to EyalGPS LTD.

We would like to thank you for choosing "Personal Spokesman" as your personal screen reader.

First Read the quick start manual and start using the application. The full capabilities of the application are fully detailed in this document. We truly recommend you to read this manual in order to clearly understand each and every option, button and symbol in the application.

EULA is located on our website: www.eyalgps.com

Table of Contents:

| <u>Page</u> | <u>Content</u> |
|--------------------|---|
| 4 | What is Personal Spokesman? |
| 5 | Technical Info |
| 6-7 | Installation Notes and Instructions |
| 8-11 | A general need-to-know on the cellular device |
| 12-17 | Main operations available with "Personal Spokesman" |
| 18-20 | Personal Spokesman Settings |
| 20 | Technical Support |

What is Personal Spokesman?

Personal spokesman is the new generation of Text To Speech applications for mobile.

With server based cutting edge technology - Personal Spokesman provides a unique screen reader, exploiting all that today's most advanced text to speech technology has to offer. Personal Spokesman' enables Symbian users an 'eye free' usage experience while utilizing the majority of their smartphone features and applications.

The application makes cellular devices accessible to various visually impaired populations and drivers. The application has numerous settings, allowing users to personalize their phones according to their level of visual impairment. The Personal Spokesman can benefit the blind, the visually impaired, the near sighted, different language speakers, dyslexic people, and drivers- all in one product.

Personal spokesman, when you enjoy listening to your Smartphone....



Technical Info:

- Users of the application have to be capable to connect to the internet (Data) through a 3rd generation internet access point. The average user data consumption is 30MB per month.

- System Requirements:

Personal Spokesman will run on one of the listed devices:

Nokia N95

Nokia N95 8GB

Nokia N85

Nokia N86

Nokia E51

Nokia E52

Nokia 6120

-Installation time may vary between 10 and 15 minutes – depending on what device the application is installed on.

An Important notice for drivers:

Usage of a cellular device while driving is dangerous and forbidden by law in many countries. EyalGPS takes off any responsibility to actions derived from usage of Personal Spokesman in anyway while driving.

Installation Notes and Instructions:

Before Installation – User must:

1. Delete the Incoming/outgoing SMS messages and unused contacts stored on the device prior to installation - this action will shorten the installation process length.
2. Disable any Screen Reader application: (Talks, Mobile Speak) prior to installation and during the use of Personal Spokesman.

After the file is transferred to the device, we can start the installation process

Installation:

1. Choose the file at the devices file manager, the installation will start automatically. During the installation, some messages will appear on screen, please approve all messages, using the left selection button.

Please be advised:

Nokia E51, N95, and N95 8GB users: When a "Choose location of installation – Phone Memory/Memory Card" message appears, please select "Phone Memory". Please make sure that there are at least 70MB of free space on the device prior the installation.

For other models users, it is recommended to install the application on the device's memory card.

2. After approving all messages, the installation completion will last a few minutes.

3. After the installation is completed, search for a "Personal Spokesman" logo under menu ==> applications.

4. As the application lunches, it will be accompanied by vocal instructions.

5. After the instructions are completed, the following screens will appear:

Target audience screen - Please choose your preferred audience.

Speech engine selection screen – Please choose you desired voice.

Internet Access point selection screen - Please choose 3g Internet point

6. After this is done. The application will start a process of converting the data (contacts and messages) into audio files - this lasts from 2 to 15 minutes - depends on the amount of data that need to be converted.

7. Please hold on throughout the process till it is completed.

8. After installation is completed this message will appear: The installation is successfully completed, Please restart the device.

9. Please restart the device.

10. Enjoy!

Thank you for choosing Personal Spokesman.

A general need-to-know on the cellular device:**Keyboard**

The cellular device has a keyboard, containing numbers, letters, and punctuation marks.

In any place where it is possible to type digits or text, "Personal Spokesman" will read aloud the digit/letter/sign typed.

This feature maximizes the accessibility for the user in any screen which requires typing of content such as phone numbers, SMS messages, adding new contacts etc.

Screens

The device shows different screens which the users can freely navigate using "Personal Spokesman".

Each screen contains different information for different features of the mobile phone. (For example: Contacts screen lets the user navigate up and down and listen to the contacts names, after finding the desired contact, user can dial to the contact in a click of a button).

Every screen is built like the following:

Title

Selected Item

Lower Keys – Key 1 and Key 2

Example:

Menu Screen:

Title – Menu

Selected Item – first in menu list "Contacts"

Key 1 and Key 2 – "Options" and "Exit"



"Personal Spokesman" will read the screen content as it appears: firstly it'll read the Title, then the Selected Item (if there is one), and finally Key 1 and Key 2.

Navigation Buttons:

The cellular device has navigation buttons allowing moving between the mobile's different screens and select different features. Personal Spokesman will read aloud every screen you move and every action you take, allowing you to easily navigate and operate your mobile.

Keys:

Joystick Navigation Key: With this joystick you can move left and right, up and down, and navigate through items on screen.

Selection Key: located at the center of the joystick.

Key 1 and Key 2: 2 buttons in each screen (lower part of screen) allows the user to perform different options – for example in Contacts screen the Key 1 button lets you "Add a new contact to Contacts".

Clear Key: Clear key enables the user to delete any letter/digit/sign written in as text on screen.

Menu Button: This button allows you to access the main menu screen and reach all other mobile screens through the menu.

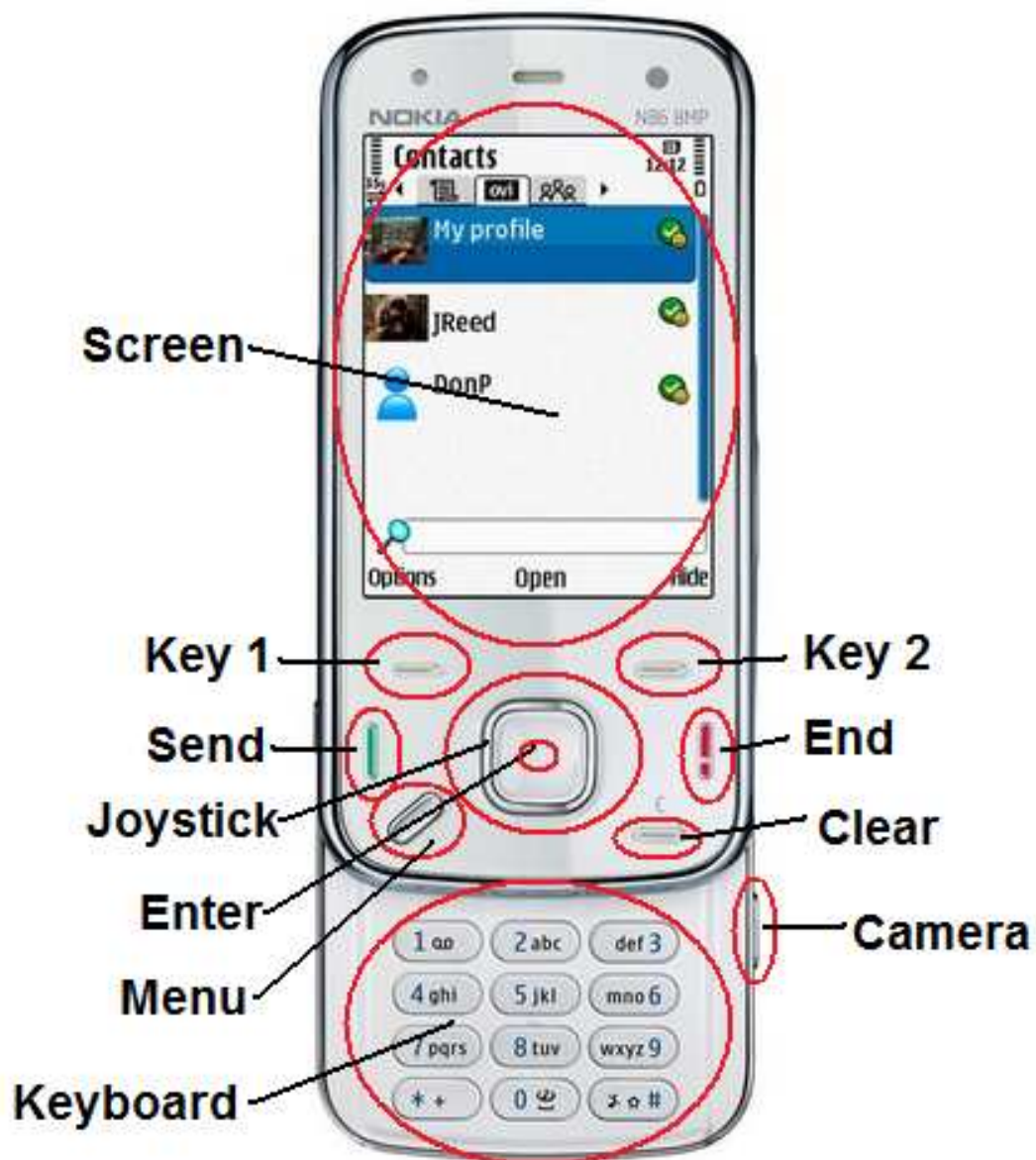
Send Button: Calls the selected contact/number.

End Button: Ends current call, Cancels active operations. When Pressing End numerous times you will reach the mobile's opening screen.

Camera Buttons and Volume Buttons: Located at the side of the mobile enables taking photos and adjusting mobile volume.

Off Button – Short press – will open "Profiles Screen" which will be elaborated on in this document. Long press – Will turn the device off.

*Every model may contain additional keys



Main operations available with "Personal Spokesman":

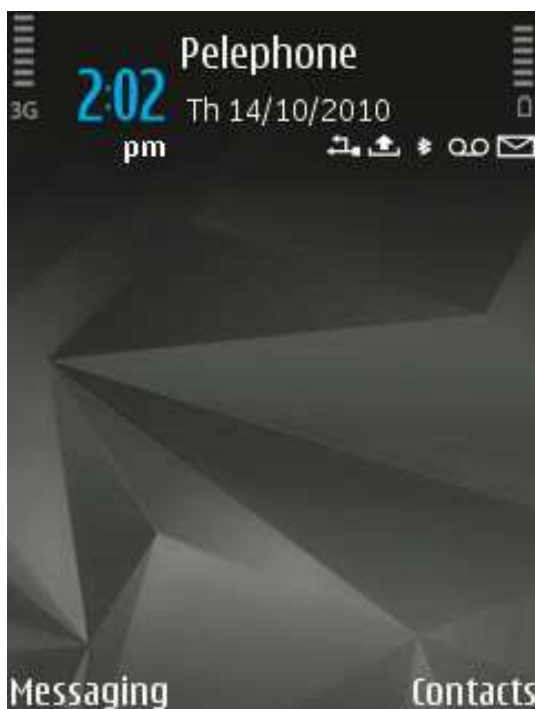
Now when we know a bit more about the mobile device, we will describe how to use the mobile together with "Personal Spokesman".

In the user manual we will address the main and most popular screens of the mobile – there are tens of other screens which are built the same way as the screens we will elaborate on in this manual. The explanation about the screens in this manual is in effect for all other screens which are built similarly.

Mobile's Main screen – Making a Call:

This screen is the mobile opening screen and it appears as the first screen when the mobile is turned on, or by pressing End button (sometimes several times) to cancel all ongoing operations.

In any step when operating the mobile you can press End (sometimes several times) to return the opening the screen.



As mentioned above - every screen is built like the following:

Title

Selected Item

Lower Keys – Key 1 and Key 2

Therefore the opening screen will be read:

- a. Title: Name of the cellular carrier (in this case "Pelephone").
- b. Selected Item: In this screen there is no Selected Item, go to step C.
- c. Key 1 and Key 2 will be read.

The opening screen allows the user to type a phone number using the mobile keyboard – all typing will be read, when done, pressing Send key will call the typed number.

To cancel you can press the clear key to delete the last typed digit/s or End key to delete the entire typed number.

Menu Screen: through Menu screen the user is able to reach all other mobile screens – screens such as Contacts, Messaging, Maps, Music and much more.



As mentioned above - every screen is built like the following:

Title

Selected Item

Lower Keys – Key 1 and Key 2

Therefore the Menu screen will be read:

- a. Title: "Menu"
- b. Selected Item: The first selected record on screen will be read – in this screen "Contacts".
- c. Key 1 and Key 2 will be read.

Contacts Screen:

In this Screen user is able to Search for a contact, Add a new contact, Send contacts and other operations available for contacts.



As mentioned above - every screen is built like the following:

Title

Selected Item

Lower Keys – Key 1 and Key 2

Therefore the Menu screen will be read:

- a. Title: "Contacts"
- b. Selected Item: The first selected record on screen will be read – in this screen the first contact name – if exists.
- c. Key 1 and Key 2 will be read.

In this screen the user is able to perform different actions:

1. User can navigate up and down using the joystick and listen to the Contacts names. User can use Send Button to call them.
2. Using the Selection Button (Center of joystick) you can listen to the phone number of the selected contact.
3. Pressing Key 1 will open options screen, the available options are:
 - 3.1 Adding a new contact:

Pressing "Add a new contact" will open a new screen called "New contact" – In this screen user will be able to start editing the new contact's name using the keyboard, when finishing editing the contact name user is able to move down using the joystick and start editing contact phone number. After this process completion user is able to press Key 2 – Done, in order to keep changes.
 - 3.2 Editing a SMS message:

You are able to send the selected contact a SMS message by clicking on key 1 "Options" and scrolling down to the "Create Message" option and selecting it. In the next screen please select "Text message" and a new screen will open up and read "Start

Editing", here you need to type the requested text for sending and finally press Send button in order to send the message.

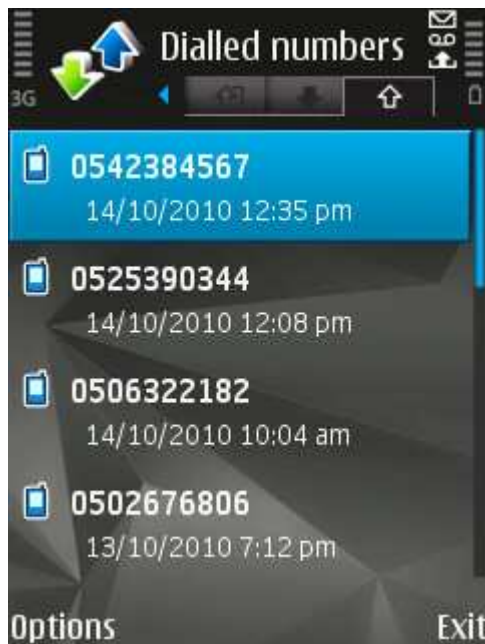
4. Pressing a letter in the Contact screen will result showing a group of all contacts beginning with the typed letter.
 - There are many other functions and features which can be performed and which are based on the same steps written before – read of Title and Selected Item and then Key 1 and Key 2.



Incoming/Outgoing and Unanswered Calls Screens:

These screens give the user access to the list of all Incoming/Outgoing and Unanswered Calls. In order to reach the screens user need to press Send in the opening screen of the device.

Notice: No numbers should be typed prior to pressing Send.



When pressing Send a "Dialed Numbers" screens will appear, you can use the joystick, navigate down and up and listen to all the dialed phone numbers including date and time.

In order to get to the rest of the screens, outgoing calls and unanswered calls, you can navigate left and right using the joystick, in those screens you are also able to navigate down and up and listen to all the actions available.

Please Notice: the read is the same as before, firstly it'll read the Title, then the Selected Item (if there is one) and finally Key 1 and Key 2.

Read of Caller ID:

When "Personal Spokesman" is enabled the caller ID will be read in combination with a selected ringtone.

In case when the Caller ID is not being read when receiving an incoming call, please press a short press on the "Off button" and navigate down to the "Personal Spokesman "profile, please select it. In the next incoming call, the contact ID will be read.

Personal Spokesman Settings:

In every device there is a "special key" which "Personal Spokesman" utilizes for creating shortcuts to common operations.

For : N86 N85 E52 6120 devices the "special key" is the camera Key which is located on the side of the device.

- For: N86 and N85 the "special key" will function only when the camera cover is close (located on the back of the phone)

For: N95, N95 8GB the "special key" is the Edit Key which is located on the right of the Send Key.

For: E51 the "special key" is the Central Key located between the volume keys at the side of the device.

Shortcuts to change most configurations:

When the application is active you can press "special key" and immediately after press on one of the digit buttons.

Example: pressing on camera button and digit 1 after will read the time.

Special key +1= Returns time

Special key +2= Lowers the volume

Special key +3= Increases the volume

Special key +4= Enable/Disable Personal Spokesman

Special key +5= Enable/Disable reading key 1 and 2

Special key +6= Enables reading aloud of a text that currently appears on screen (For example: SMS before sending).

Special key +7= Enable/Disable of item number in list reading aloud (For example: item 15 out of 30).

Special key +8= Enable/Disable automatic reading aloud of incoming SMS (Personal Spokesman can automatically read SMSs when received)

Special key +9= Returns date

Special key +0= Manual Mode: Every shortcut pressed will result a short explanation about the shortcut meaning.

A long press on the Asterisk Key on devices: N95 N958GB N86 6120 will Enable/Disable Personal Spokesman (same as Special Key + 4).

Advanced settings can be changed at the Settings Screen of "Personal Spokesman", you are able to navigate left and right, up and down and change the requested settings.

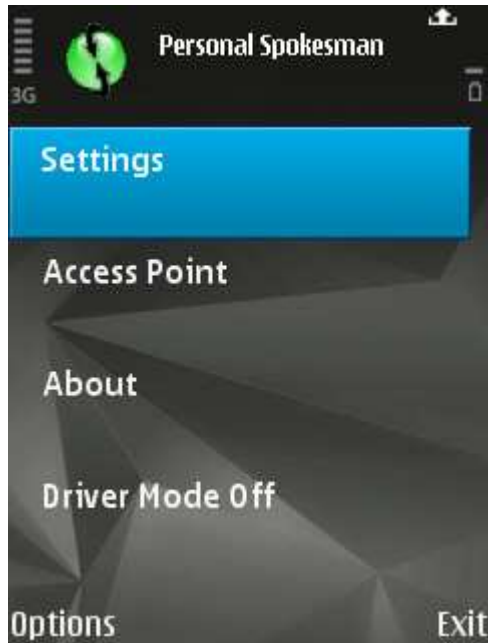
You are able to get to settings screen by pressing

Menu → Applications → Personal Spokesman → Settings

It is important to remember that the most common settings are changeable using shortcuts, the extra settings are:

- Silent mode when keypad is locked
- Read of password
- Read of Caller ID- repeating option
- Auto start when turning the mobile on

This is the main Settings screen of Personal Spokesman, through this screen user is able to get to all settings screens available for Personal Spokesman.



Technical Support:

Mail: Eyalgps@gmail.com

Web Site: www.EyalGPS.com